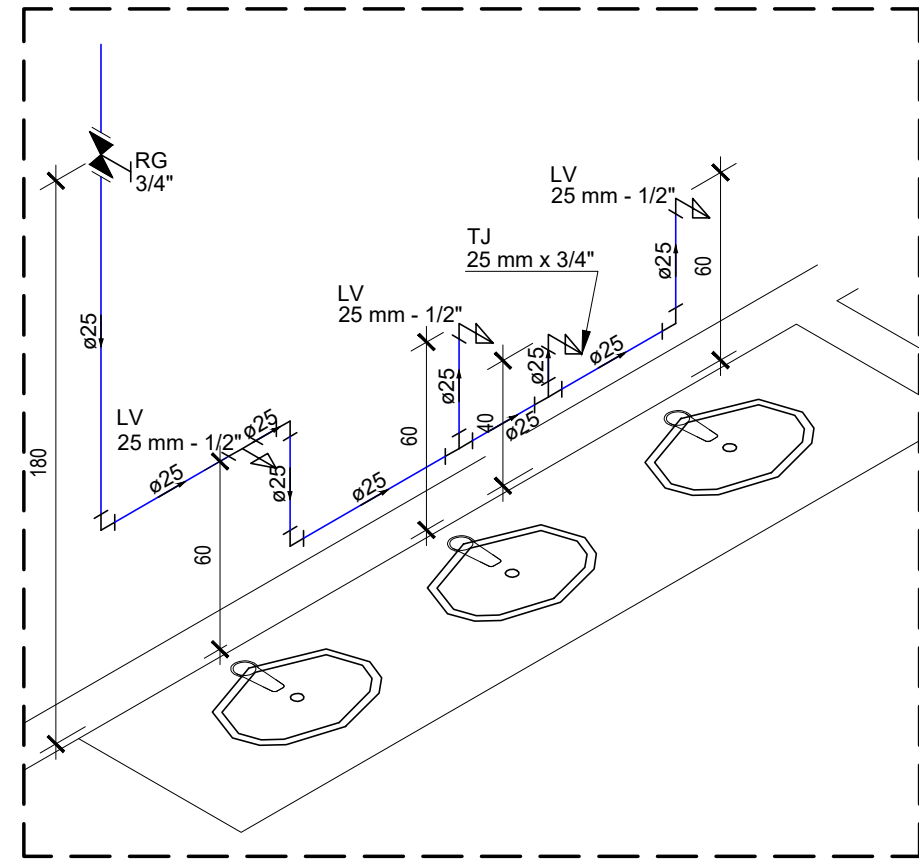
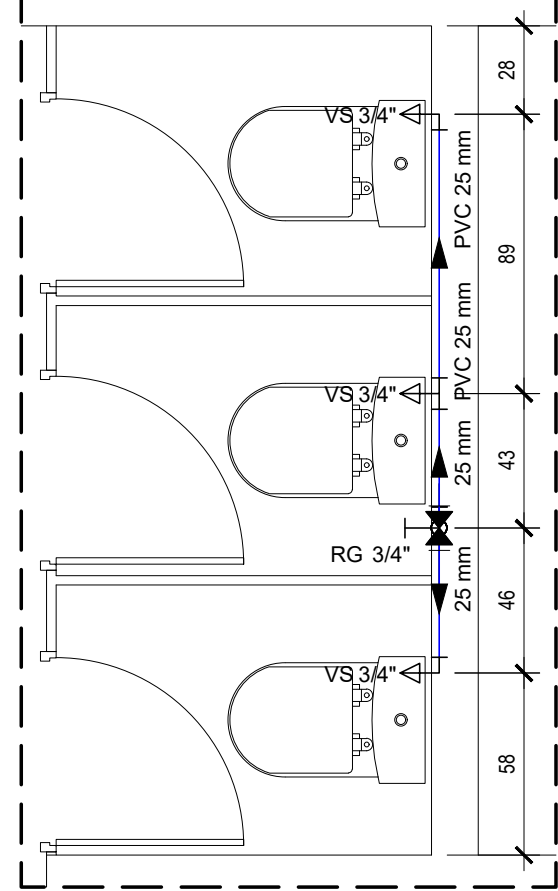


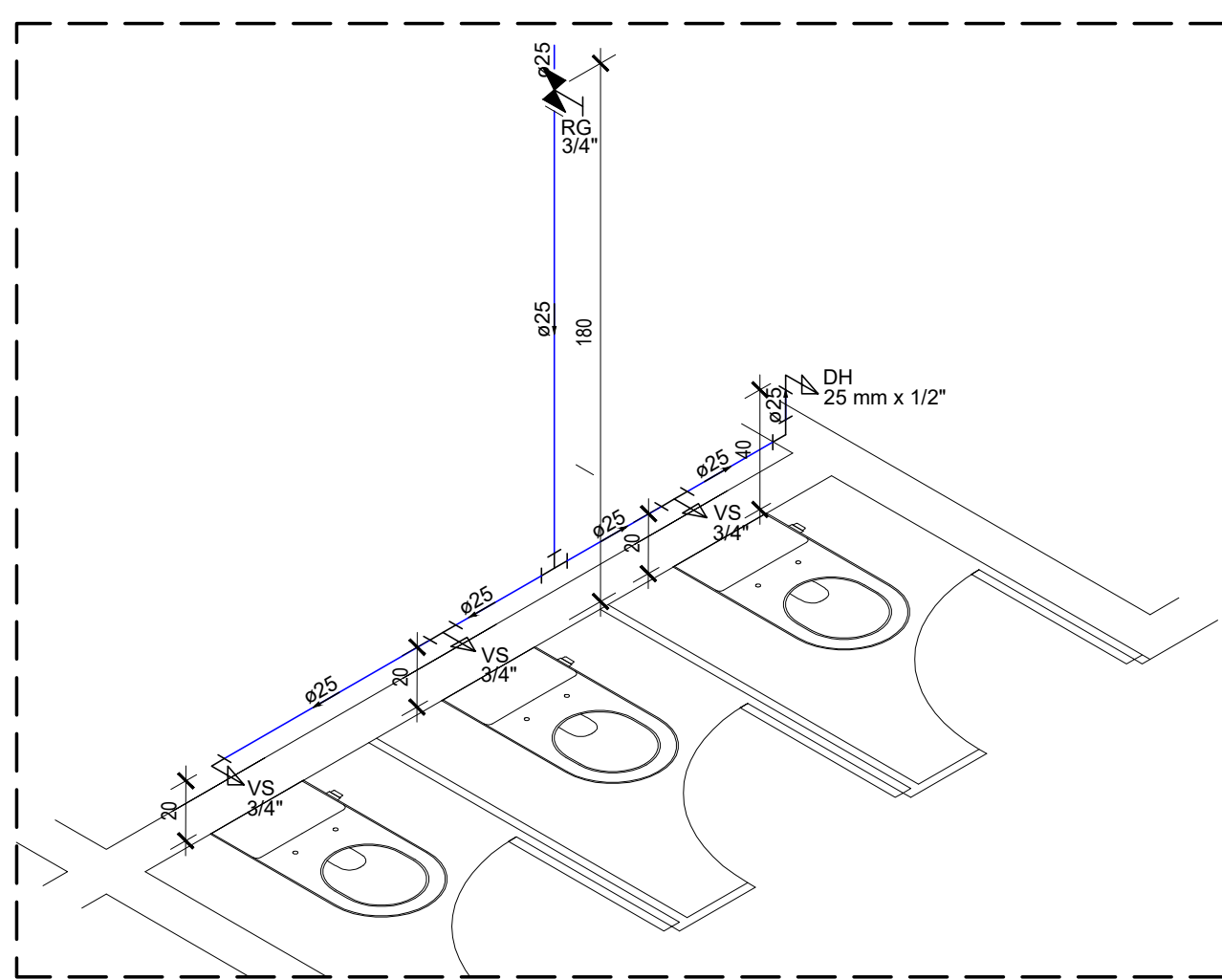
DET. H14-WC FEM.
ESCALA 1:25



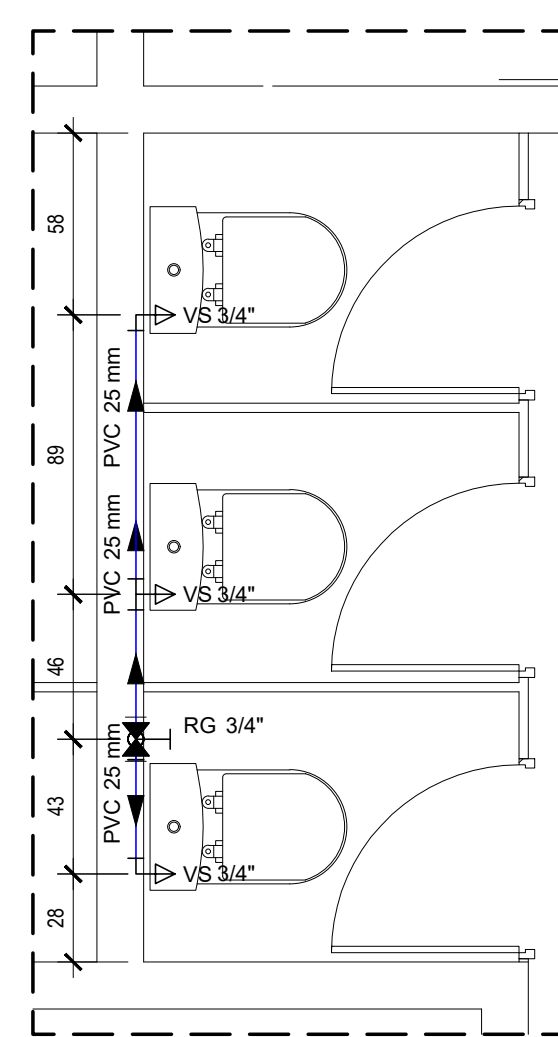
DET. ISOMÉTRICO H14-WC FEM.
ESCALA 1:25



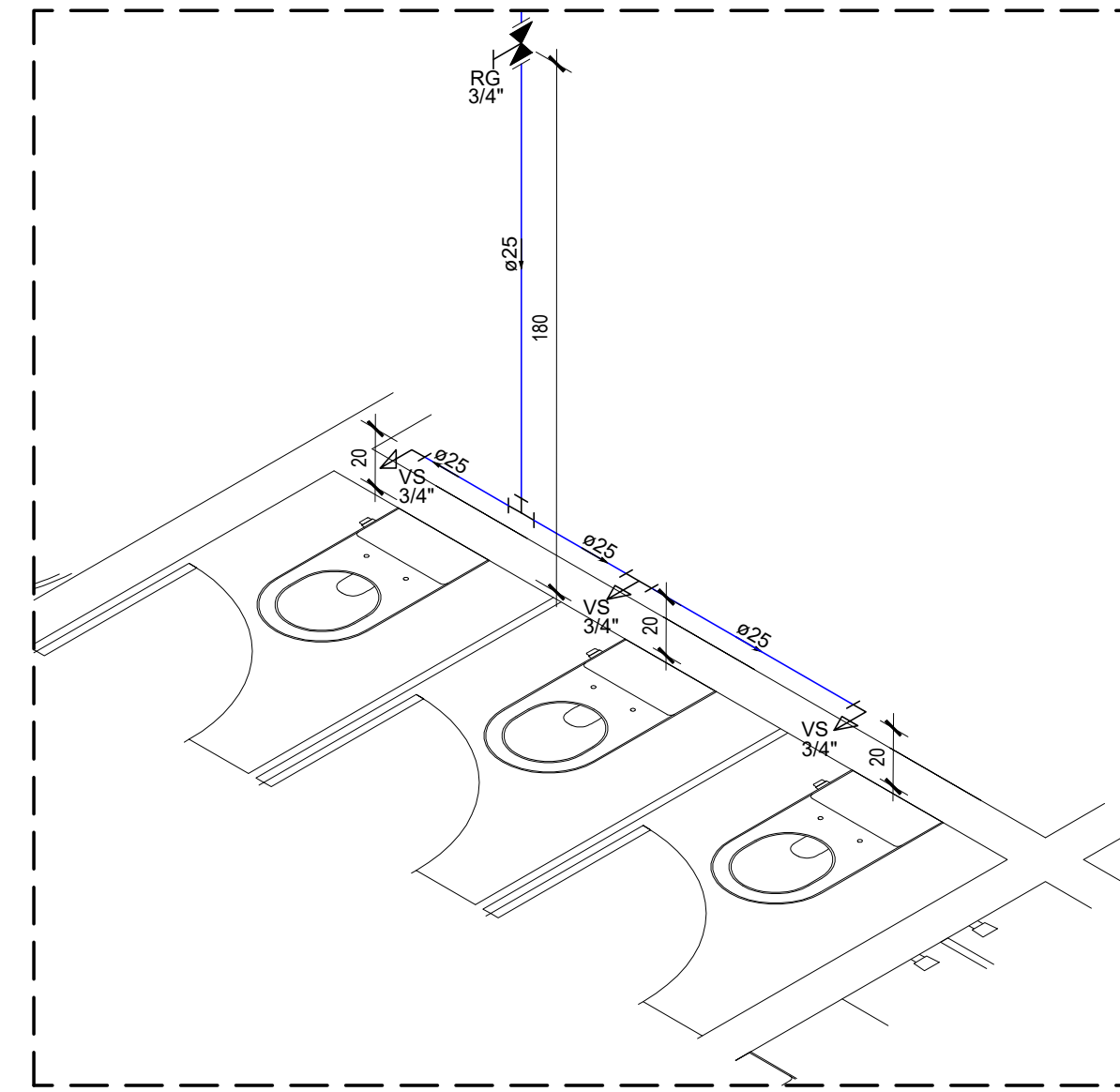
DET. H15-WC FEM.
ESCALA 1:25



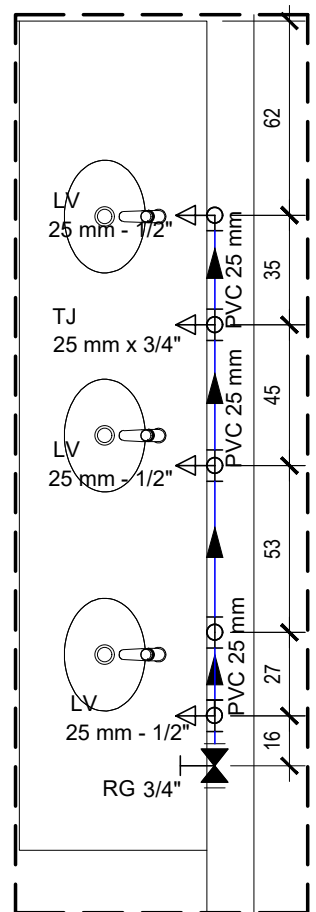
DET. ISOMÉTRICO H15-WC FEM.
ESCALA 1:25



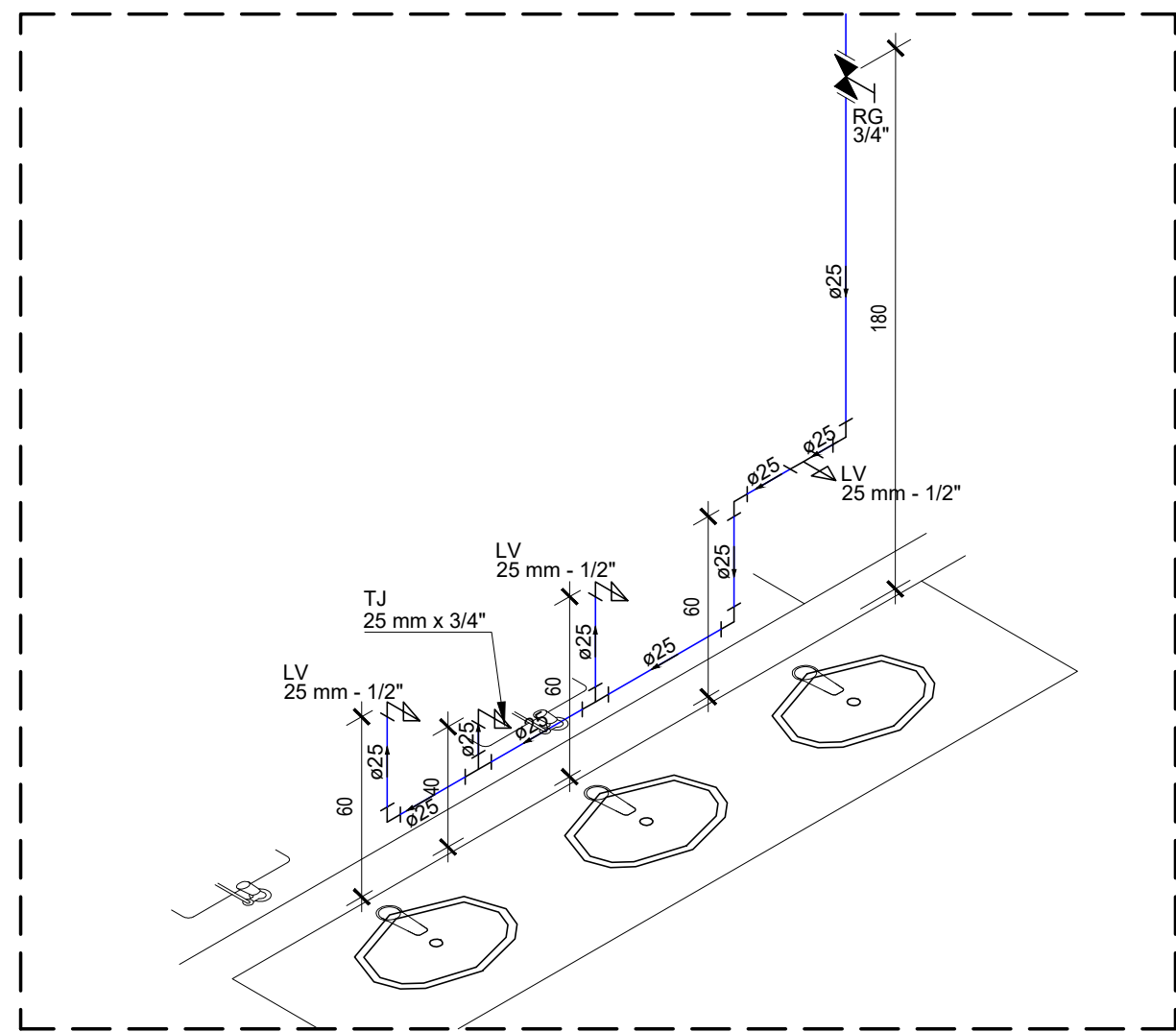
DET. H16-WC MASC.
ESCALA 1:25



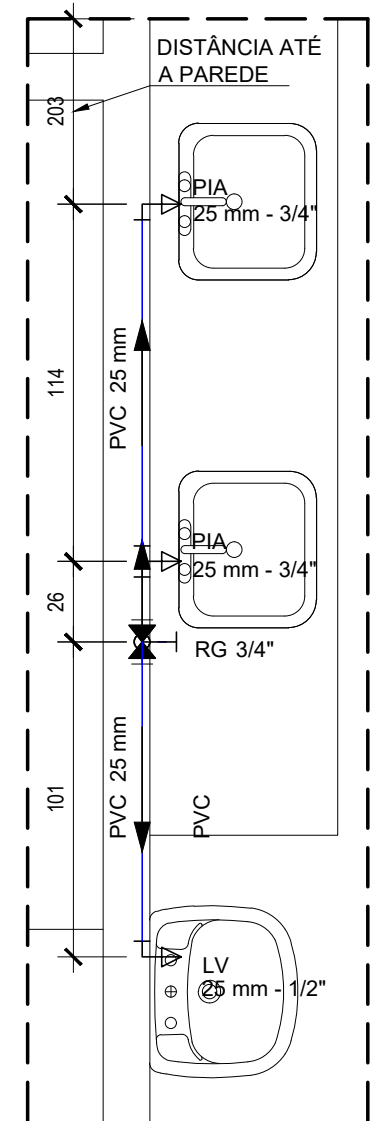
DET. ISOMÉTRICO H16-WC MASC.
ESCALA 1:25



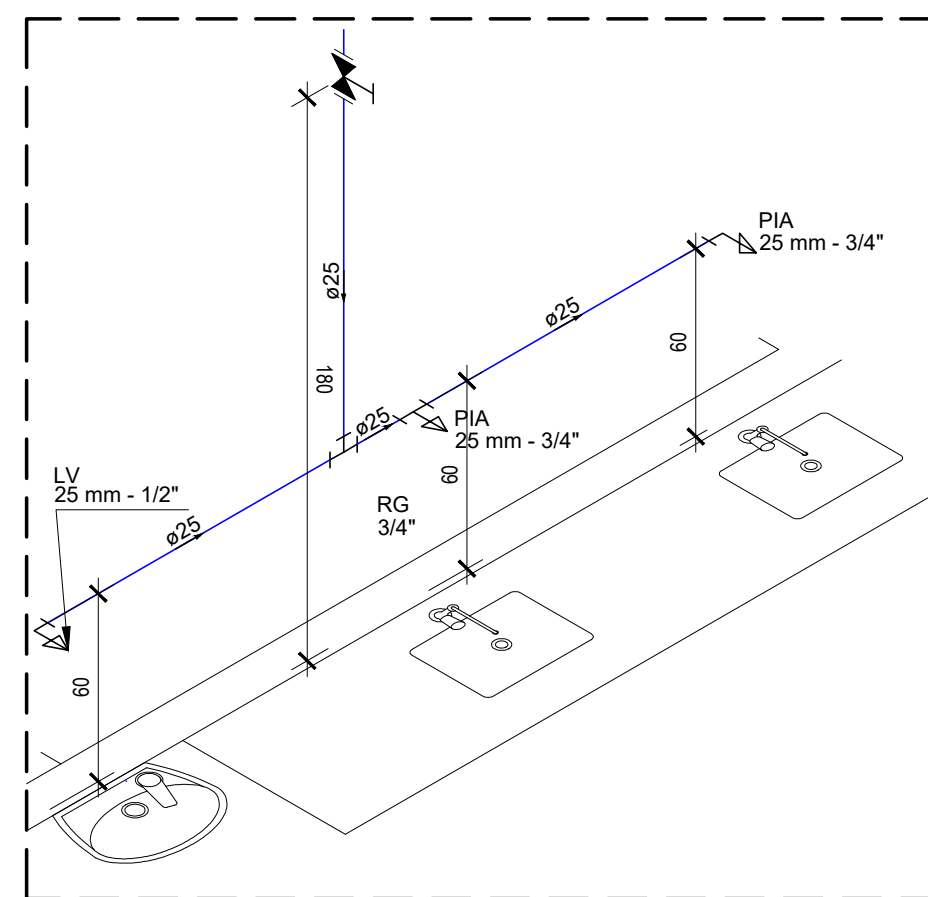
DET. H17-WC MASC.
ESCALA 1:25



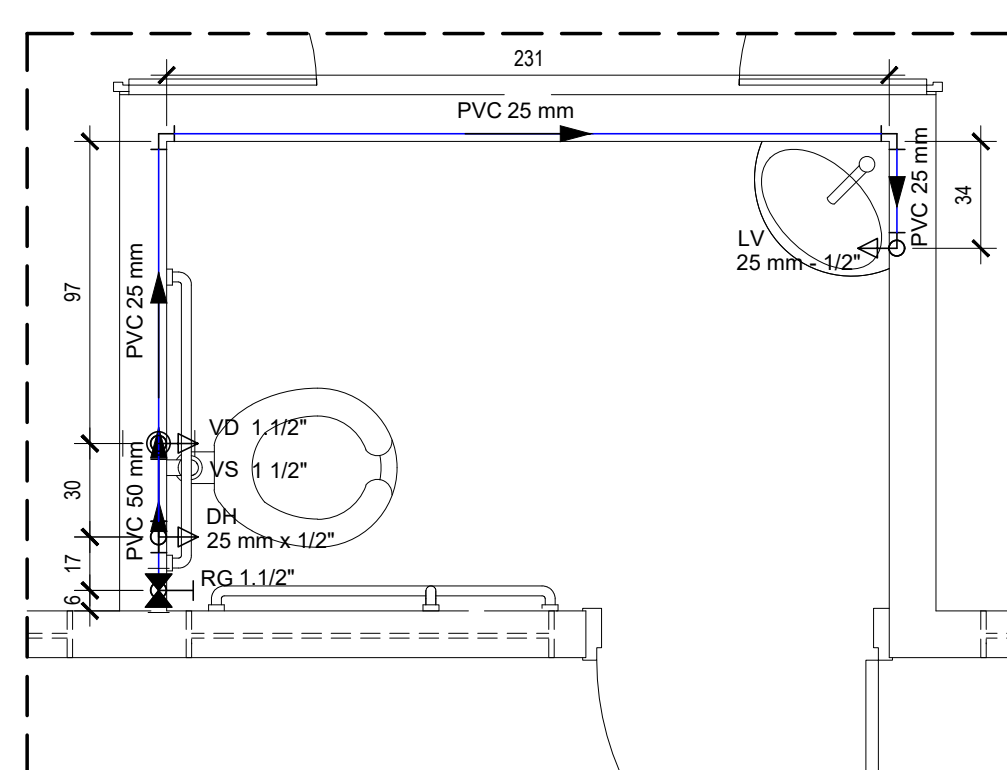
DET. ISOMÉTRICO H17-WC MASC.
ESCALA 1:25



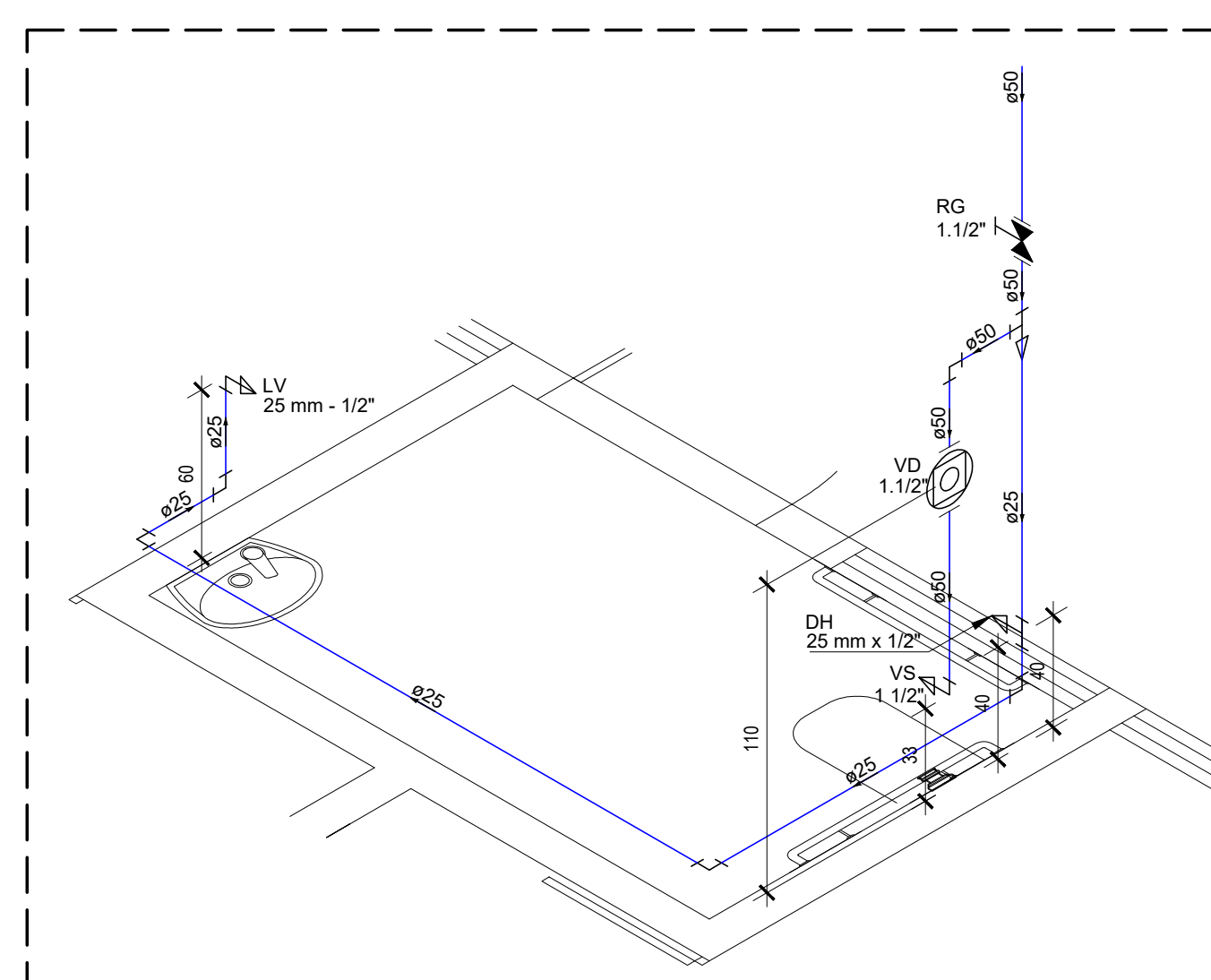
DET. H18-COZINHA
ESCALA 1:25



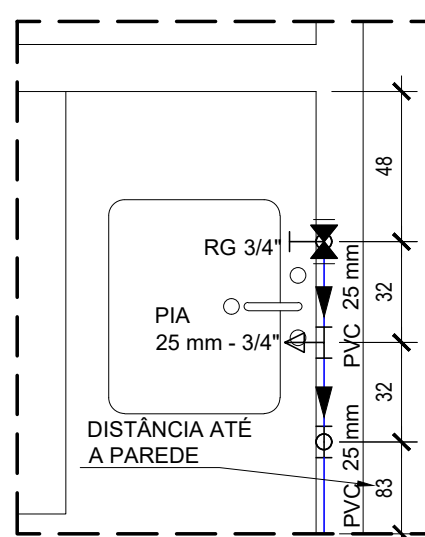
DET. ISOMÉTRICO H18-COZINHA
ESCALA 1:25



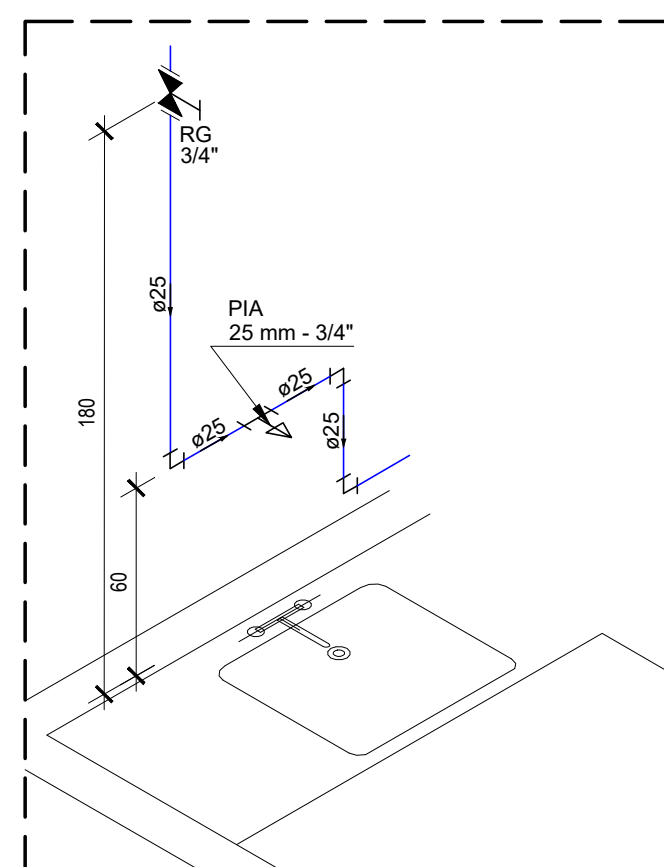
DET. H19-WC PCD
ESCALA 1:25



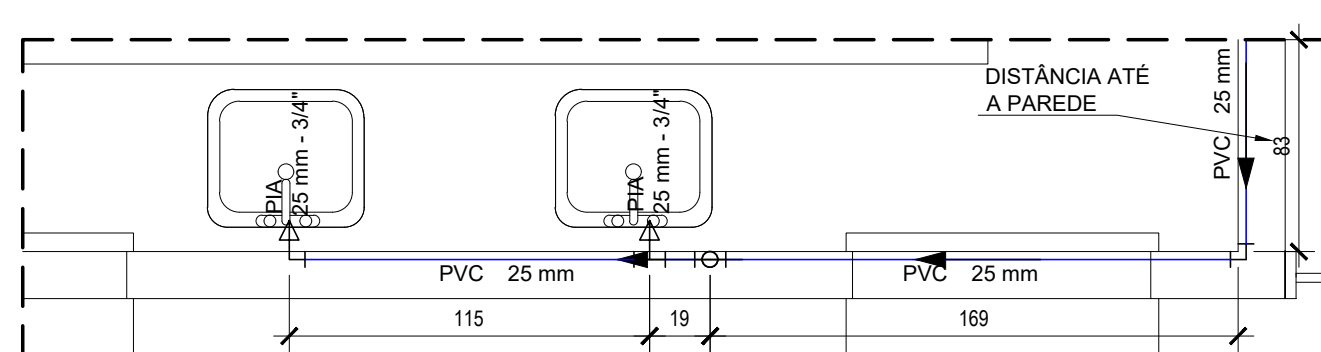
DET. ISOMÉTRICO H19-WC PCD
ESCALA 1:25



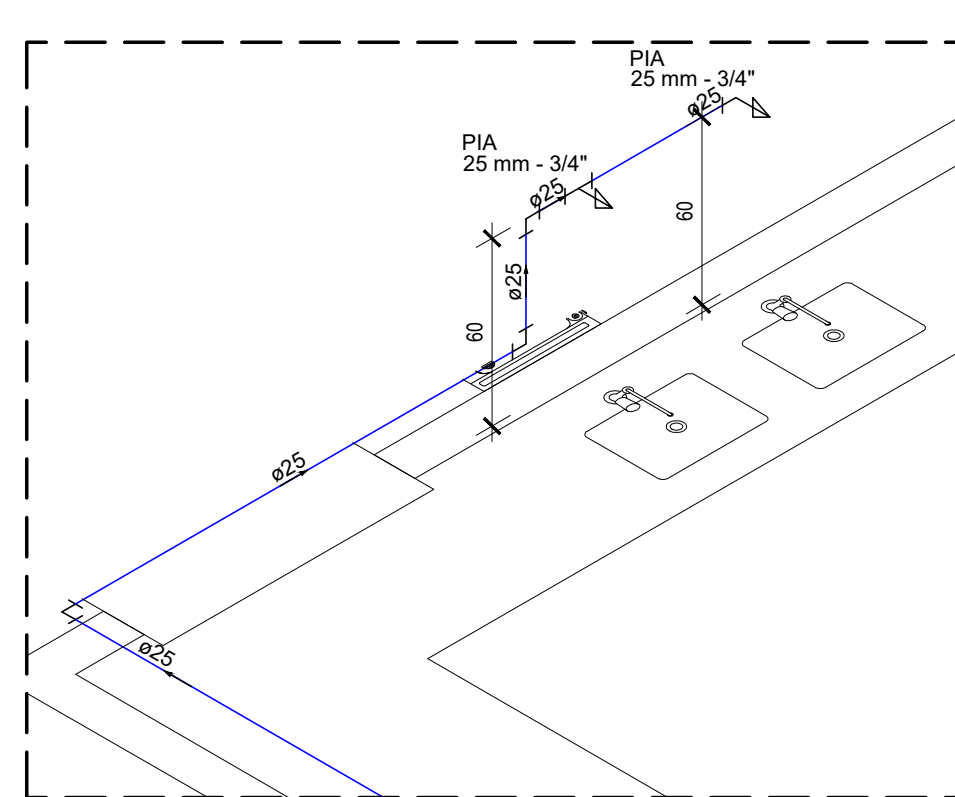
DET. H20-COZINHA
ESCALA 1:25



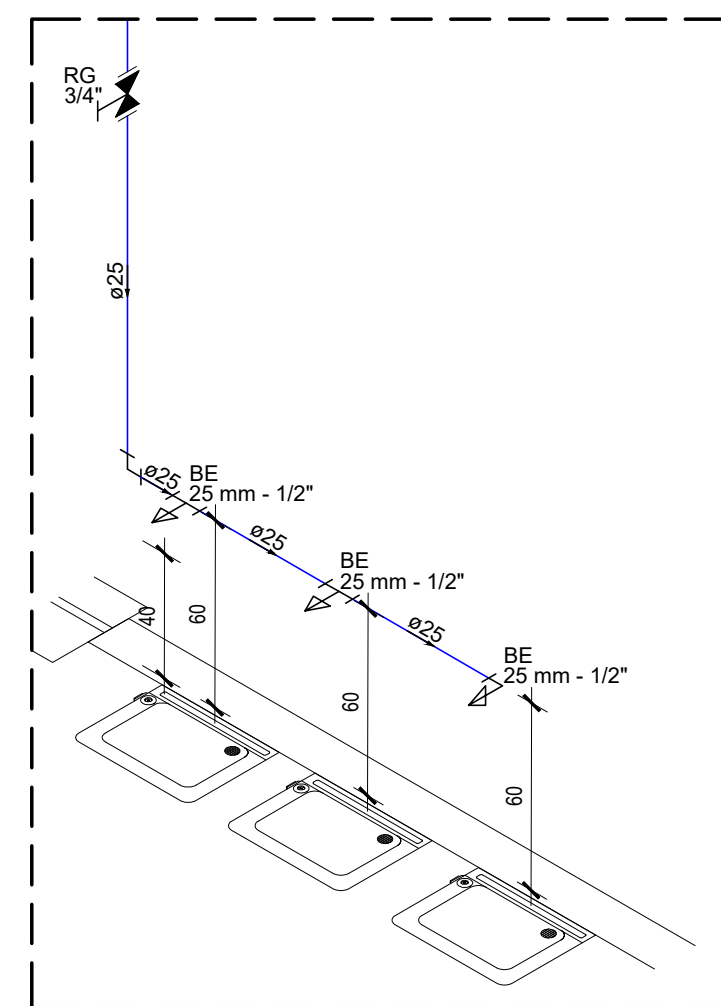
DET. ISOMÉTRICO H20-COZINHA
ESCALA 1:25



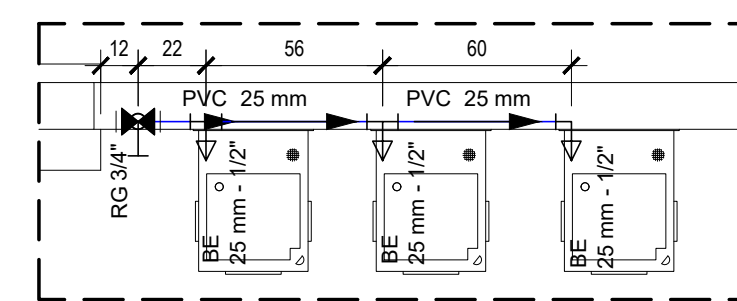
DET. H21-COZINHA
ESCALA 1:25



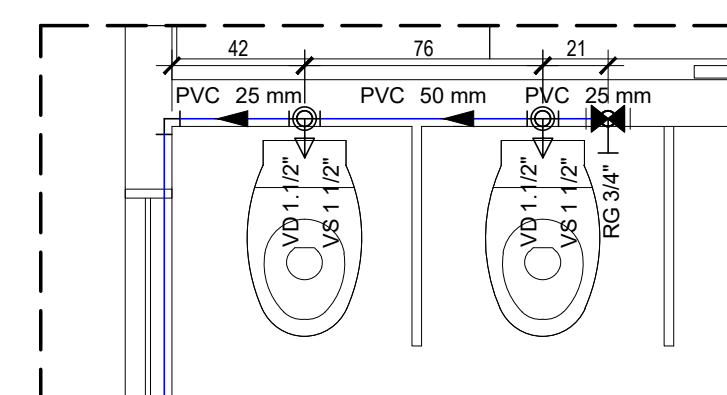
DET. ISOMÉTRICO H21-COZINHA
ESCALA 1:25



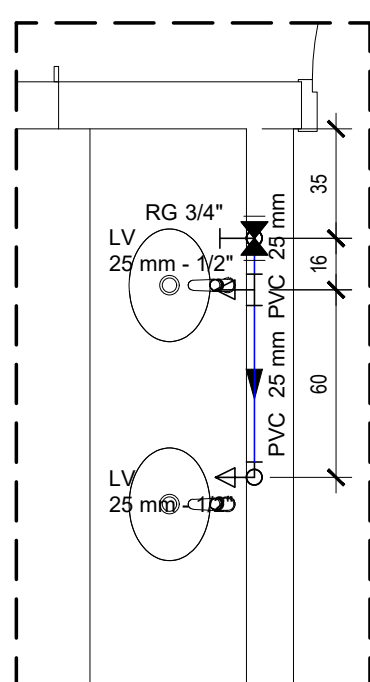
DET. ISOMÉTRICO H22-REFEITORIO
ESCALA 1:25



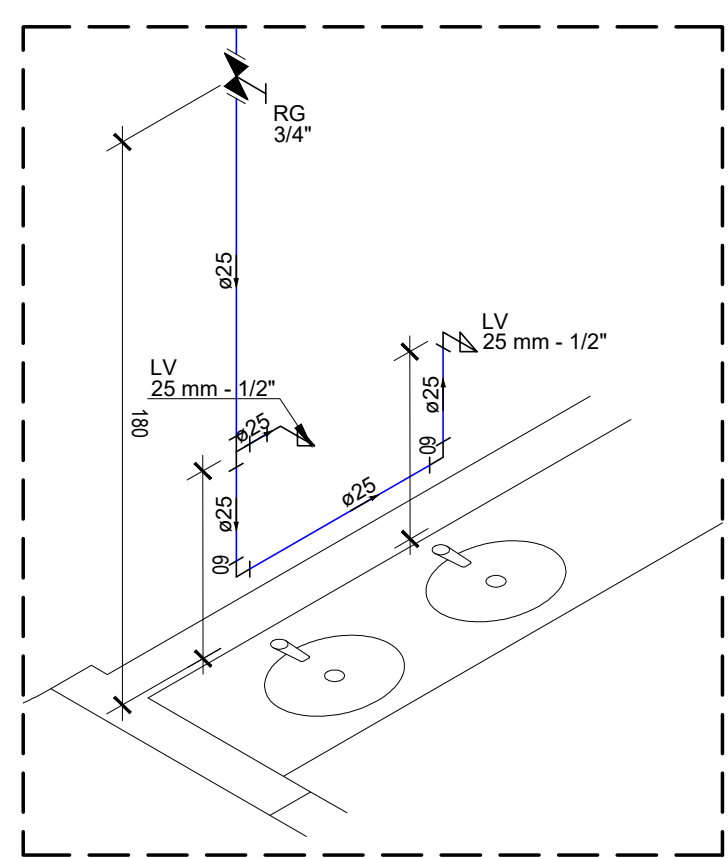
DET. H22-REFEITORIO
ESCALA 1:25



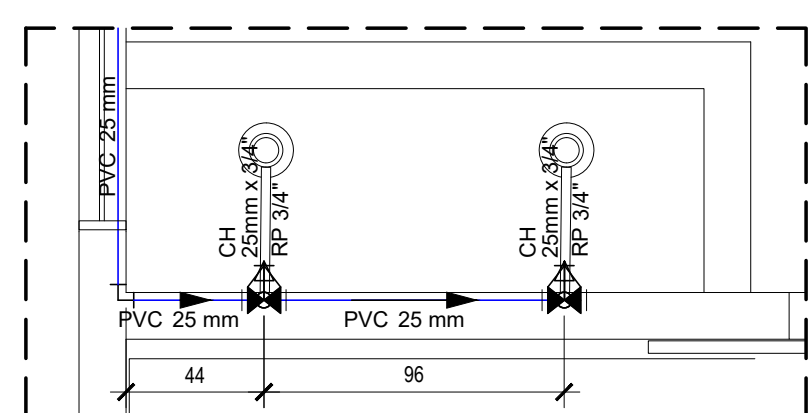
DET. H23-BANHO INF.
ESCALA 1:25



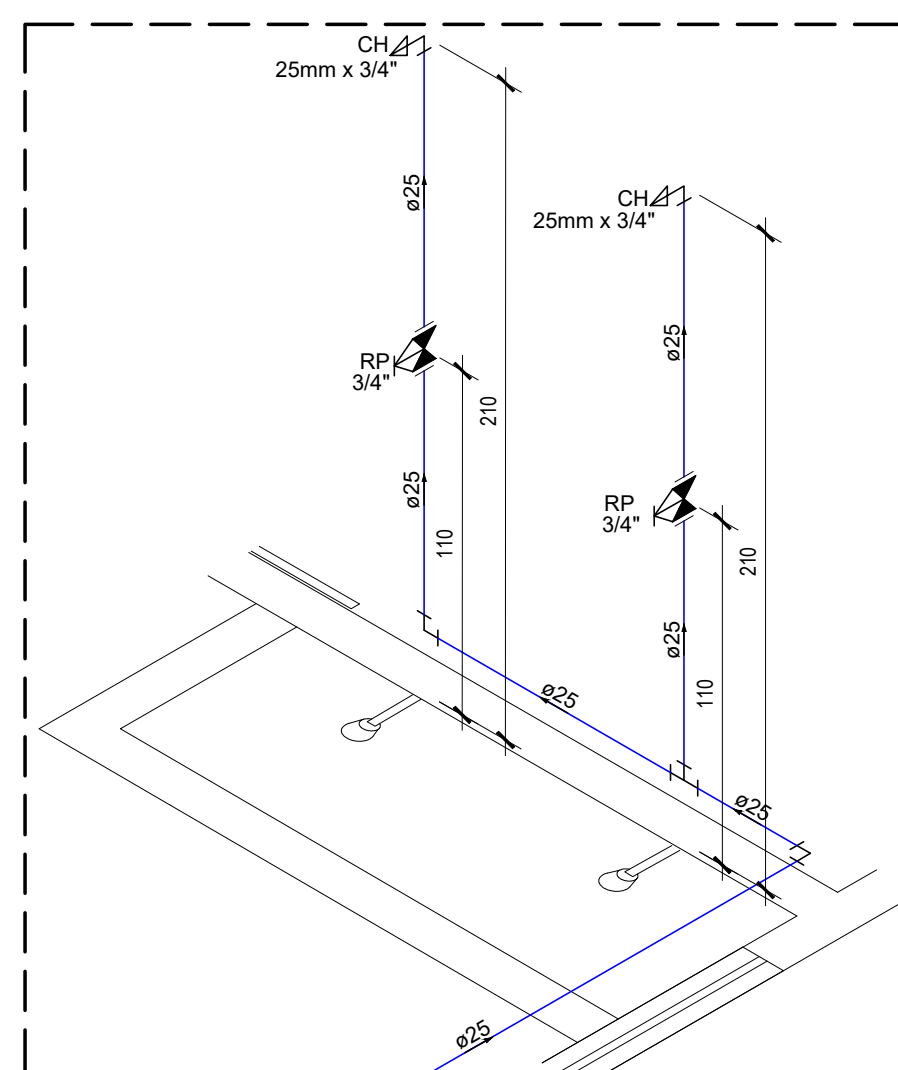
DET. H24-BANHO INF.
ESCALA 1:25



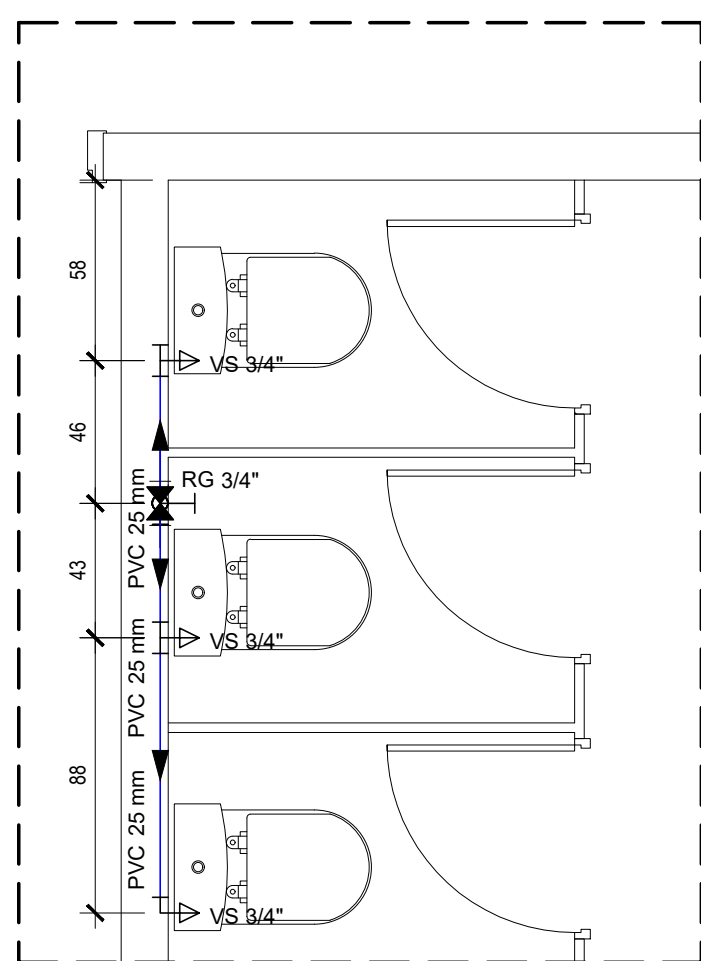
DET. ISOMÉTRICO H24-BANHO INF.
ESCALA 1:25



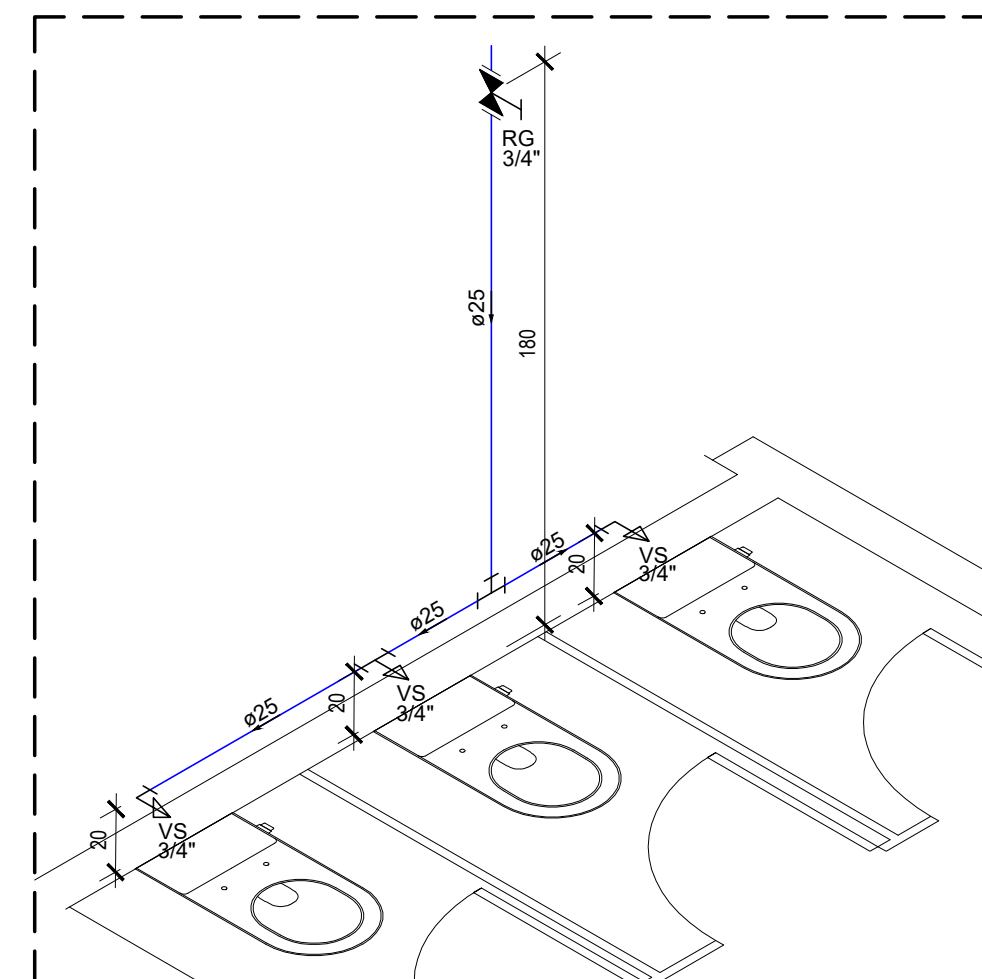
DET. H25-BANHO INF.
ESCALA 1:25



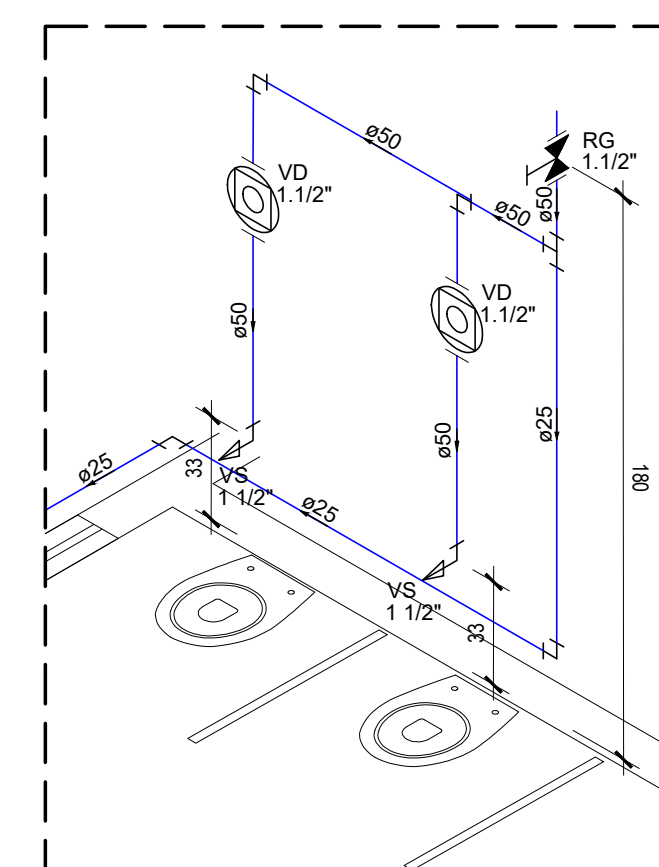
DET. ISOMÉTRICO H25-BANHO INF.
ESCALA 1:25



DET. H26-BANH. FEM.
ESCALA 1:25



DET. ISOMÉTRICO H26-BANH. FEM.
ESCALA 1:25



DET. ISOMÉTRICO H23-BANHO INF.
ESCALA 1:25

LEGENDA	
PIA	PIA
TJ	TORNEIRA DE JARDIM
DH	DUCHA HIGIÊNICA
RG	REGISTRO DE GAVETA
BE	BEBEDOR
LV	LAVATÓRIO
MLR	MAQUINA DE LAVAR ROUPA
TLR	TANQUE DE LAVAR ROUPA
RP	REGISTRO DE PRESSÃO
—	TUBULAÇÃO DE ÁGUA FRIA
---	TUBULAÇÃO DE ÁGUA FRIA PELO PISO
---	TUBULAÇÃO DE ALIMENTAÇÃO PELO PISO
⊗	Registro bruto gaveta ABNT oPVC soldável - RG
⊗	Registro de gaveta c/atomia cromada oPVC soldável - RG
⊗	Bucha de Redução
⊗	Registro de Pressão com PVC soldável - 25 mm - 3/4"
CV	Ventilação
Ø	Tubulação
Ø	COLUNA DE ALIMENTAÇÃO



PROJETO DE HIDROSSANITÁRIO EXECUTIVO



CLIENTE:
PREFEITURA DE CONCEIÇÃO DO CASTELO - ES
CNPJ: 27.165.570/0001-98

TÍTULO:
**RECONSTRUÇÃO DA EMEF MATA FRIA E REFORMA
DA QUADRA POLIESPORTIVA**

LOCALIZAÇÃO:
CONCEIÇÃO DO CASTELO - ES, CEP: 29370-000

COORDENADAS:
20°17'05.3"S 41°10'52.2"W

RESPONSÁVEL TÉCNICO:
Arquiteto e Urbanista Luiz Alberto Gonçalves Barbosa CAU nº747193-0

DESENHO: DATA: DEZEMBRO/2023

ESCALA: 1:25

UNIDADE: METRO

ARQUIVO: HD-EMEF MATA FRIA-12-23-102